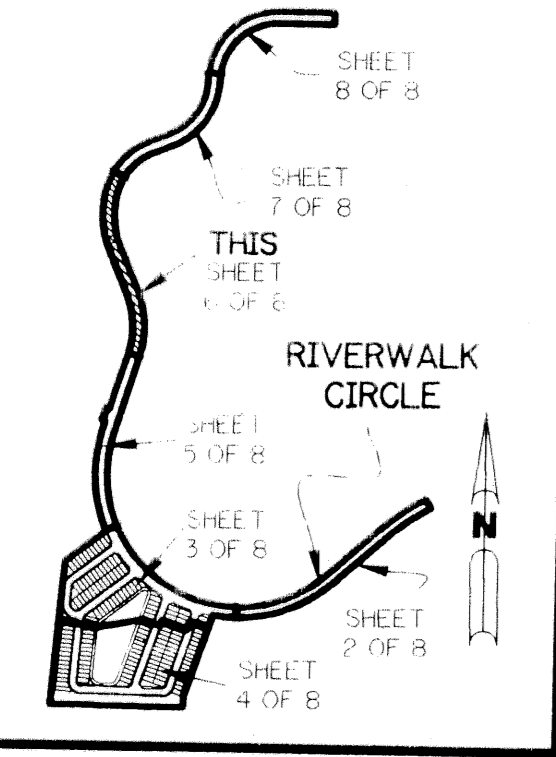


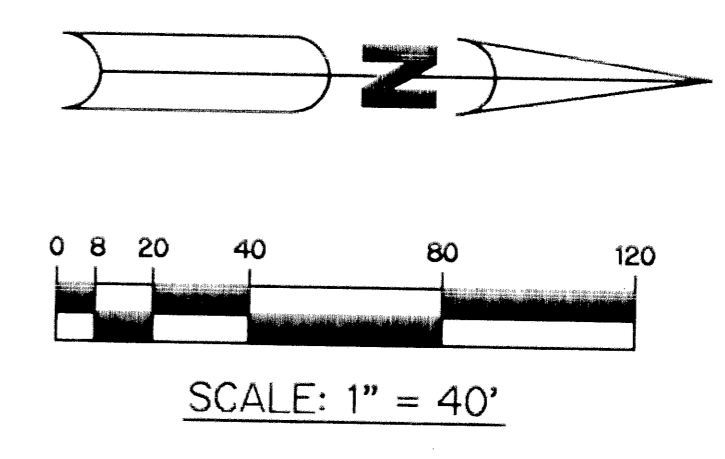
# RIVERWALK - PLAT SIX

A PARCEL OF LAND LYING IN SECTION 21, TOWNSHIP 43 SOUTH,  
RANGE 42 EAST, CITY OF WEST PALM BEACH,  
PALM BEACH COUNTY, FLORIDA.

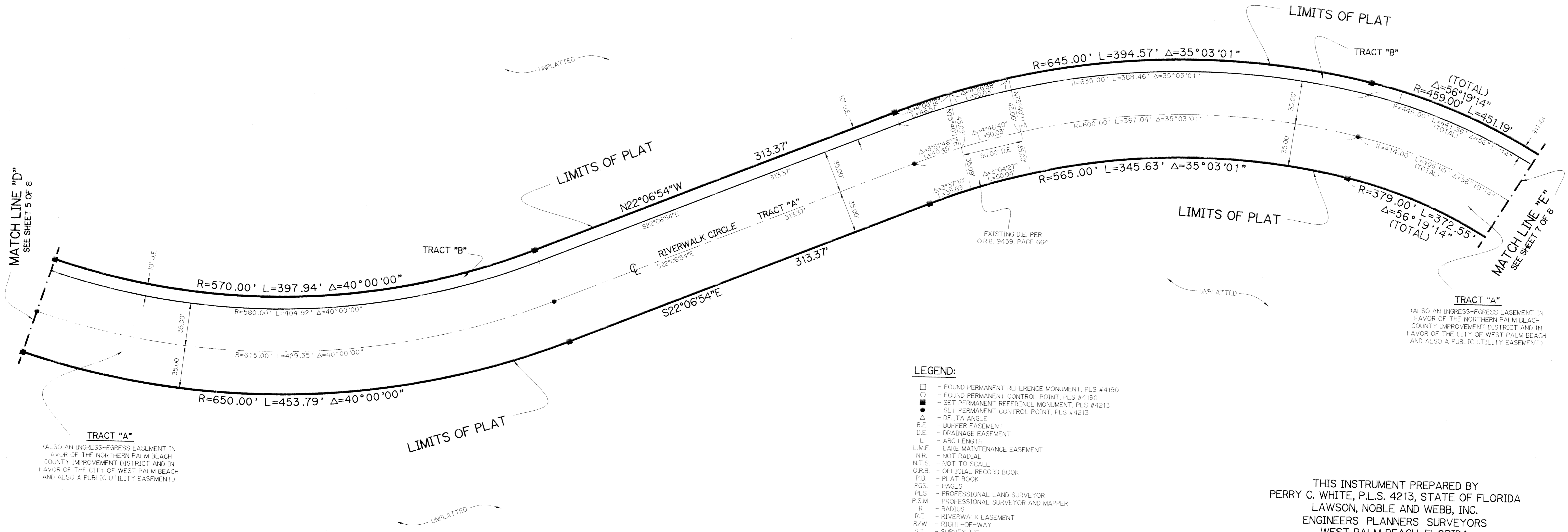
SHEET 6 OF 8      MAY, 1997



KEY MAP  
N.T.S.



SCALE: 1" = 40'



MATCH LINE "D"  
SEE SHEET 5 OF 8

MATCH LINE "E"  
SEE SHEET 7 OF 8

TRACT "A"  
(ALSO AN INGRESS-EGRESS EASEMENT IN FAVOR OF THE NORTHERN PALM BEACH COUNTY IMPROVEMENT DISTRICT AND IN FAVOR OF THE CITY OF WEST PALM BEACH AND ALSO A PUBLIC UTILITY EASEMENT.)

- LEGEND:**
- - FOUND PERMANENT REFERENCE MONUMENT, PLS #4190
  - - FOUND PERMANENT CONTROL POINT, PLS #4190
  - - SET PERMANENT REFERENCE MONUMENT, PLS #4213
  - - SET PERMANENT CONTROL POINT, PLS #4213
  - Δ - DELTA ANGLE
  - B.E. - BUFFER EASEMENT
  - D.E. - DRAINAGE EASEMENT
  - L - ARC LENGTH
  - L.M.E. - LAKE MAINTENANCE EASEMENT
  - N.R. - NOT RADIAL
  - N.T.S. - NOT TO SCALE
  - O.R.B. - OFFICIAL RECORD BOOK
  - P.B. - PLAT BOOK
  - P.G.S. - PAGES
  - PLS - PROFESSIONAL LAND SURVEYOR
  - P.S.M. - PROFESSIONAL SURVEYOR AND MAPPER
  - R - RADIUS
  - R.E. - RIVERWALK EASEMENT
  - R/W - RIGHT-OF-WAY
  - S.T. - SURVEY TIE
  - U.E. - UTILITY EASEMENT

THIS INSTRUMENT PREPARED BY  
PERRY C. WHITE, P.L.S. 4213, STATE OF FLORIDA  
LAWSON, NOBLE AND WEBB, INC.  
ENGINEERS PLANNERS SURVEYORS  
WEST PALM BEACH, FLORIDA

SUBDIVISION # 119-870  
BOOK 80 PAGE 57  
FLOOD ZONE FLOOD MAP #  
QUAD # ZONING  
SE ZIP CODE  
PUD NAME CITY OF WEST PALM BEACH 119 870